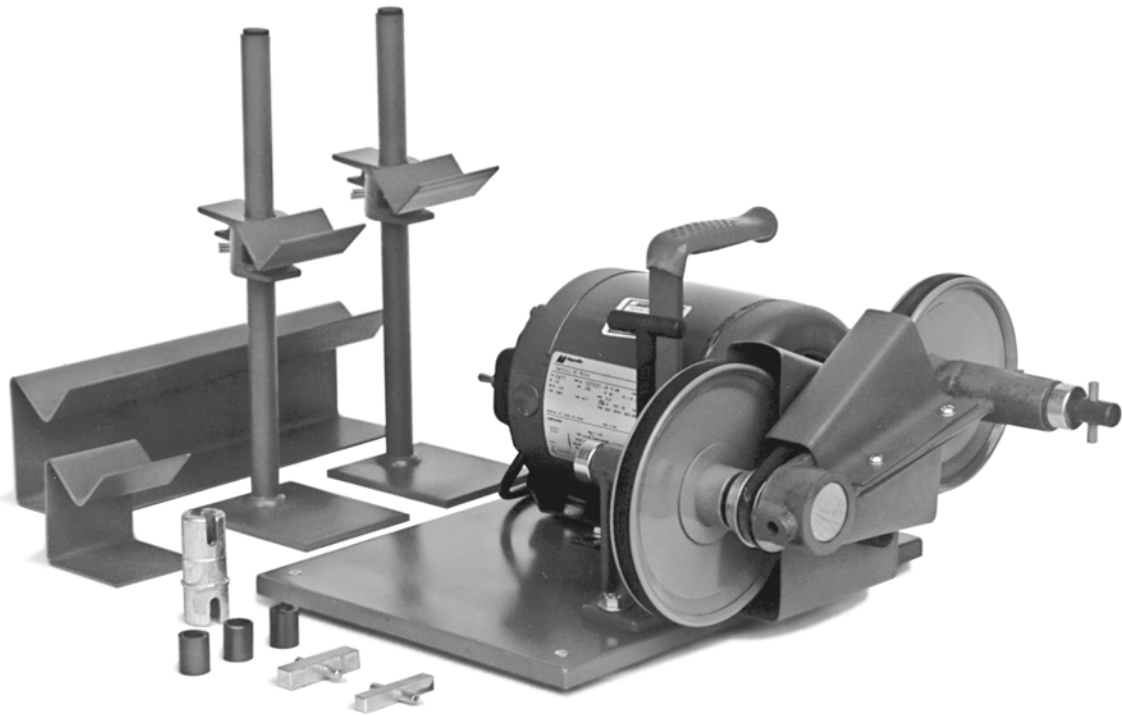


# Simplex 160 Lapping Machine



Thank you for selecting the Simplex 160 Lapping Machine. We believe it is the finest industrial grade lapping machine for reel mowers available. Made with heavy gauge steel and cast iron, and a large 1/2 horsepower motor, the Simplex 160 will provide years of efficient, trouble free service.

## Safety Guidelines

The following is a list of general safety guidelines. Please read and understand these guidelines before proceeding. As is the case with most machinery, failure to operate it in a safe manner may result in injury. Please be careful.

1. **Keep all guards in place and functioning properly.**
2. **Do not wear any loose clothing or jewelry which may get caught in the machinery. Secure long hair in a cap or net.**
3. **Keep your work area clean and organized.**
4. **Never leave grinder running while unattended.**
5. **Motor must come to a complete stop before reversing.**

## Operation

The Simplex 160 is factory and shipped complete with all accessories. To use, plug into a grounded 115 volt outlet.

Lapping consists of revolving the reel backwards while applying lapping compound evenly to the blades with a brush. This compound causes each reel blade to lap itself in with the bed knife

resulting in a perfect match of reel and bed knife.

Lapping is a satisfactory method of sharpening when the reel and bed knife blades are slightly rounded and do not cleanly cut the grass. Lapping is also used to create a land or flat after manually relief grinding the reel. Lapping should not be used to recondition reels with excessive rounding of the blades, bad nicks, or uneven bed knife wear.

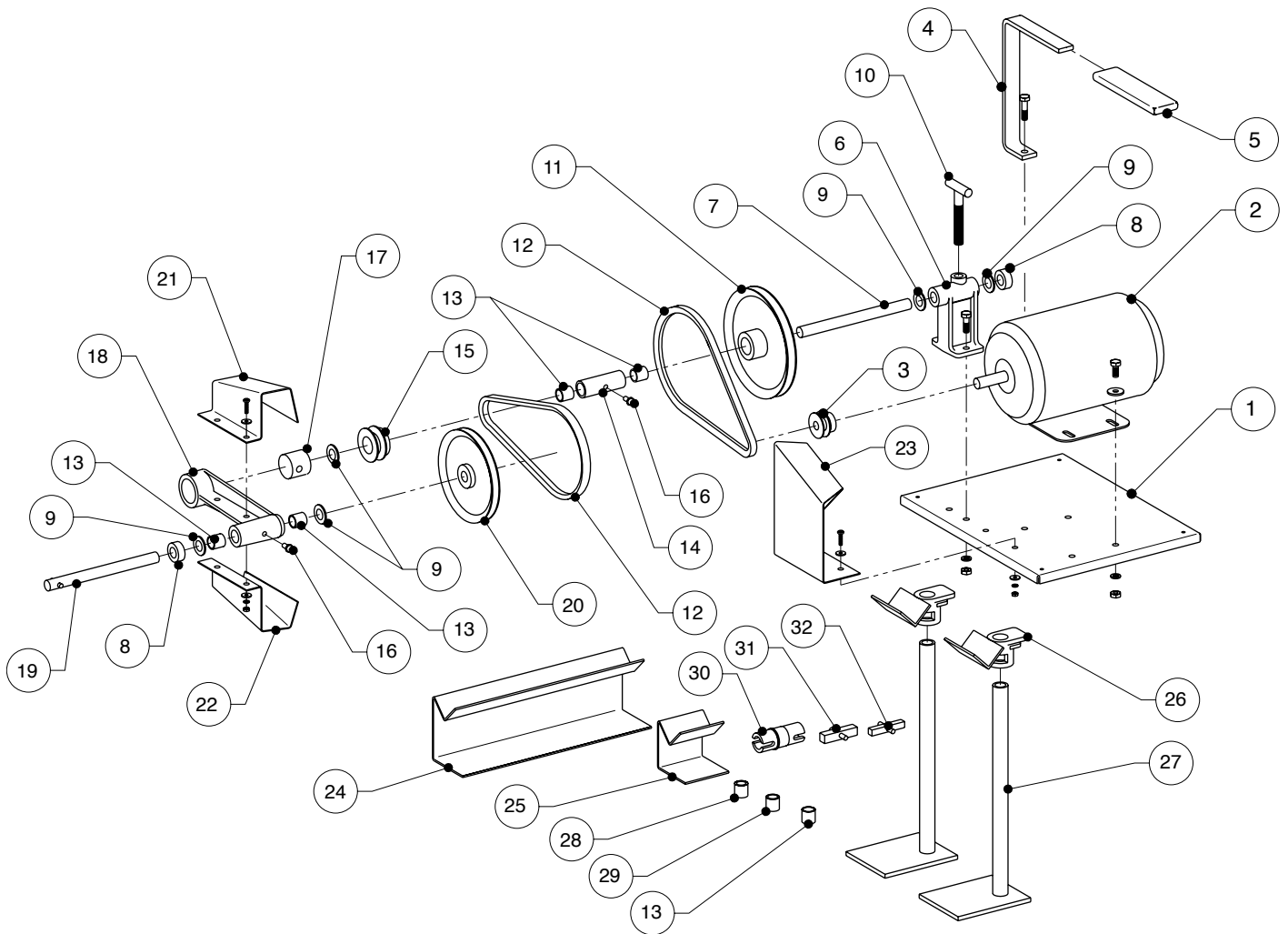
Adjust the bed knife so that there is slight clearance all the way across. This will allow the lapping compound to get between the blades and may cause the bed knife to spring slightly while being lapped-in. If necessary, adjust the bed knife a second or third time after lapping has progressed as required.

Support the mower off the floor using the roller rests and jack stands. Place the jack stands at the front of the mower and raise the support jacks so they just support the deck plate or spacing bar of the mower. Tip the mower using the support jacks as pivots and place the roller rest under the rear roller. The mower should be in position with the wheel off the ground and so the lapping compound will continue to run down between the blades

Remove which ever wheel is most convenient. Remove the pinion cover and pinion gear. On hand mowers, reverse the pawl so that the flat edge will be in a position to catch the driving coupler and revolve the reel backwards.

Place the lapping machine in position, loosen the T-bolt (10) which locks the pivoting radius arm and adjust the height of the drive shaft.

Place the drive coupler on to the drive shaft and the mower. Turn on the lapping machine so that it turns the reel backwards. If it is not turning backwards, turn the lapping machine off, wait until it comes to a complete stop, then turn it on in the reverse direction. Continue to lap a necessary.



Item	Qty	Part No.	Description	Item	Qty	Part No.	Description
1	1	76195-02	R195 Base	16	2	15010-02	Red Grease Fitting Cover
1	6	12005-01	5/16-18 Hex Nut	17	1	76183-01	R183 Cam
1	4	12205-01	5/16 Washer	17	2	12506-03	3/8-16 X 3/8 Set Screw Cup Point
1	6	12105-01	5/16 Lock Washer	18	1	76179-01	R179 Arm
2	1	76212-02	Motor (1/2 HP)	18	2	12506-03	3/8-16 X 3/8 Set Screw Cup Point
2	1	75072-01	PB72 Switch Rev.	19	1	74101-01	P101 Shaft
2	1	76212-03	Motor Switch Box	20	1	77111-01	Pulley 5.5" x .625"
2	1	75093-01	PB92 Cord & Plug	21	1	77114-01	Belt Guard-Radius Arm Upper
2	2	75093-07	Wire Nut, Small Blue	22	1	77114-02	Belt Guard-Radius Arm Lower
2	1	75093-10	Ring Wire Connector	22	2	12303-03	#10-24 x 3/4 Slot Head Screw
2	2	75093-09	Tab Wire Connector	22	4	12203-01	#10 Washer
2	3	12305-06	5/16-18 X 3/4 Hex Head Cap Screw	22	2	12103-01	#10 Lock Washer
3	1	77112-01	Pulley 1.5" X .625"	22	2	12003-01	#10 Hex Nut
4	1	76196-02	R196 Handle	23	1	77113-01	Belt Guard-Base
4	1	12305-10	5/16-18 X 1 Hex Head Cap Screw	23	2	12303-02	#10-24 x 1/2 Slot Head Screw
5	1	76555-01	R555 Grip	23	4	12203-01	#10 Washer
6	1	75102-01	PB102 Pedestal	23	2	12103-01	#10 Lock Washer
6	2	12305-10	5/16-18 X 1 Hex Head Cap Screw	23	2	12003-01	#10 Hex Nut
7	1	74101-02	P101X Shaft	24	1	76174-01	R174 Roller Rest
8	2	74027-01	JD27 Collar	25	1	76191-01	R191 Roller Rest
9	5	75052-01	PB52 Washer	26	2	73034-01	JD34 Support Jack
10	1	73069-01	JD69 Screw	27	2	74199-01	P199 Stand
11	1	77110-01	Pulley 6.5" X 1"	28	1	72164-02	J164A Bushing (9/16 In)
12	2	73050-26	Belt 26"	29	1	72164-03	J164B Bushing (1/2 In)
13	5	72164-01	J164 Bushing (5/8 In)	30	1	72240-01	J240 Coupler
14	1	77108-01	Idler Shaft	31	1	74054-01	P54 Coupler
15	1	77109-01	Pulley 2" X 1"	32	1	74476-01	P476 Coupler
16	2	15010-01	1/4-28 Str, Self Tapping Grease Fitting				